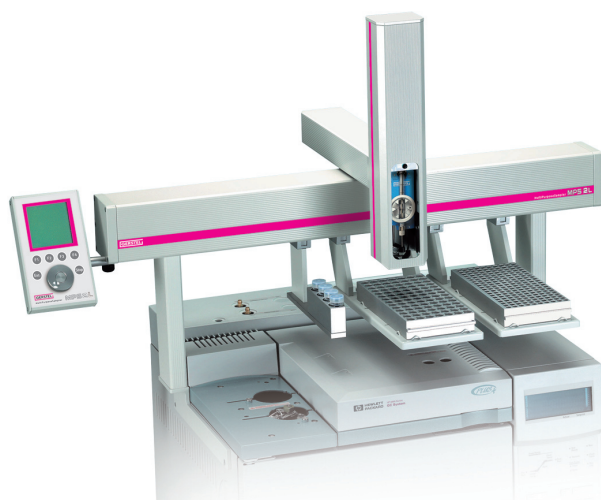



GERSTEL


MultiPurpose Sampler

MPS 2L

Specifications

Sampler type

- XYZ robot with syringe-only concept
- Positioning accuracy $\pm 0,1$ mm

System configuration

- compatible with most standard GCs
- compatible with all standard inlets
- operates with all injector positions
- for more than one injector
- numerous accessories available

System versions

- MPS Liquid
- no upgrade for headspace sampling possible
- special solutions on request

Control

- based on GERSTEL MAESTRO software and the MPS handheld keypad
- sample prep by mouse click
- in-depth, context sensitive online help for easy operation of the software

Sample capacity

- 200 \times 1 mL vials per tray
- 98 \times 2 mL vials per tray
- 78 \times 1 mL vials per tray
- 32 \times 10 mL/20 mL vials per tray
- max. 4 trays, depending on configuration

Thermostated sample trays

- temperature range 4 ... 200 °C
- for 1 mL, 2 mL, 10 mL and 20 mL vials
- with peltier or liquid cooling

Wash stations

- solvents 2 ... 4
- solvent reservoirs 10 ... 1000 mL

Interfaces

- 1 \times Interface
- 3 serial interfaces for PC, handheld keypad and valves

Operating conditions

- 10 ... 40 °C
- relative humidity 95%

Power requirements

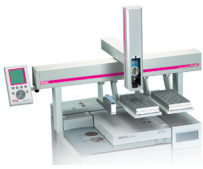
- 97.5 ... 264 VAC
- 45 ... 66 Hz
- 150 VA

Dimensions (W \times D \times H)

- 828 \times 385 \times 648 mm

Weight

- 10 kg (without accessories)



MPS Liquid

Vials

- 1 mL, 2 mL, 10 mL or 20 mL
- thermostated, 4 ... 200 °C

Syringe

- 1.2 µL, 5 µL, 10 µL, 25 µL, 100 µL, 250 µL, 500 µL or 1000 µL
- one universal syringe holder for all syringe volumes

Injection volume

- 0.12 ... 1000 µL, depending on syringe volume
- max. 99 injections per vial

Injection modes

- standard
- sandwich technique with air or solvent
- large volume

Speed

- injection speed 0.1 ... 100 µL/s, depending on syringe volume
- fill speed 0.1 ... 100 µL/s, depending on syringe volume
- separate settings for injection and rinse steps
- separate settings for sample and solvent

Precision*)

- < 0.8 % RSA

Carryover*)

- < 0.08 %

Rinse steps

- separate adjustment of pre- and post-clean steps
- using sample or solvent
- for up to 2 different solvents

Needle penetration

- in sample vial 1 ... 45 mm
- in solvent vial 1 ... 45 mm
- in CIS injector 20 ... 45 mm

Specials with MAESTRO software only

- real sandwich technique
- standard addition
- multiple sample prep-ahead

*) under GERSTEL standard conditions